

ARCHITECTURAL DIGEST

THE INTERNATIONAL MAGAZINE OF DESIGN

JULY 2007

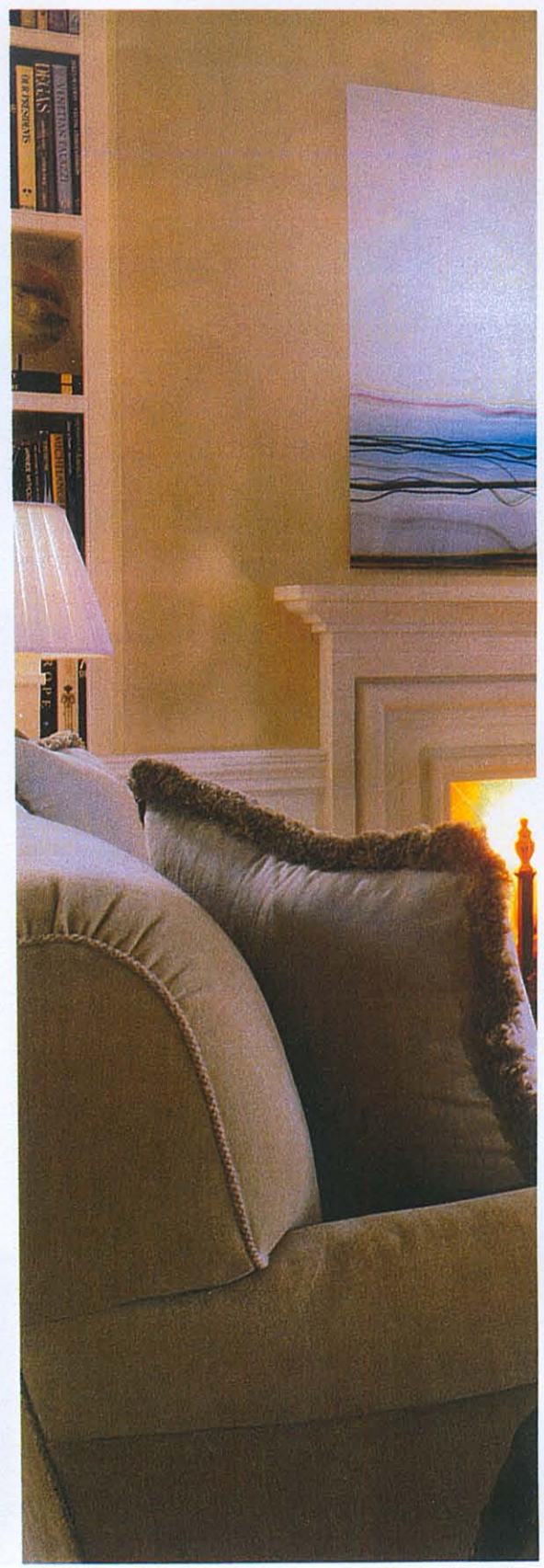


U.S. \$5.95
CANADA/FOREIGN \$6.50



0843-0135

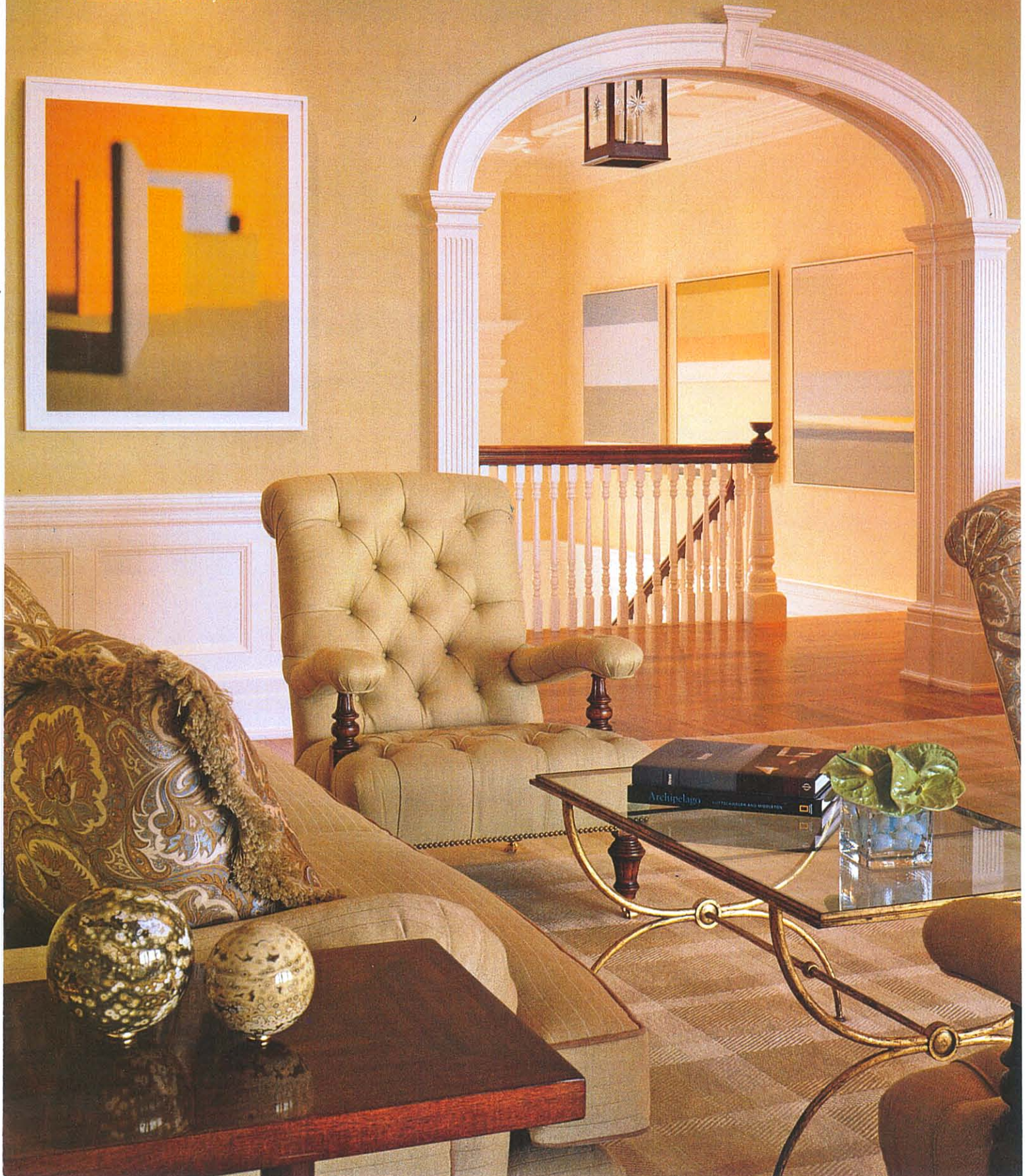
0 357075 3



A SOUTHERN SPELL

OUTSIDE CHARLESTON, A COUPLE CREATE A SPACIOUS ISLAND RETREAT FOR FAMILY AND FRIENDS

"The house had to function on two levels—with the lightness of a beach house but with the gravitas the architecture dictated," says designer Elissa Cullman. Robsjohn-Gibbings side table, Karl Kemp. Low table, Suzanne Golden Antiques. Sofa and tufted chair fabrics, Holly Hunt.





A SOUTHERN SPELL

continued from page 89

tional,” according to Cullman. “It’s cleaner and bolder and has fewer layers of information than a lot of our other work.”

The vitality of the rooms owes a good deal to the artwork they collected with the couple. “We had so many walls to fill, and because it wasn’t their primary residence, we had to be realistic about budget,” recalls Fischbach. They haunted art fairs and Chelsea galleries in search of large-scale photography and prints and a few oil paintings by mostly upcoming artists. They commissioned a series of six

“This is not what you would call a typical beach house,” says Cullman. “The architecture is very robust and sculptural.”

abstract oils by Sarah Hinckley to brighten the three-story entrance hall and tracked down images of unique significance to the family, from dog studies by Ed Ruscha and William Wegman to old black-and-white surfing pictures to four “aura portraits” of the couple and their children. “You go to Chinatown in New York,” explains the husband, “you drink some green tea to get in the mood, and you get your photo taken. I don’t know what it’s called, but they illuminate colors from your picture, and a woman interprets the colors. My wife has amber coming from the center because she’s the stable force in the family—” “I don’t know if you need that kind of detail,” his steadier half demurs. “The point is, it’s a good example of something eclectic and unique. Ellie and Jenny did a great job of creating a balance between understated, elegant and fun. Those are the three best ways to describe our home.”

When the family’s in residence, the scales tip in favor of fun. They come down to the island eight to 10 times a year with their chocolate Lab and as many as 10 or 15 houseguests. According to the husband, “a typical trip with family and friends will be, we’ll spend all day at the beach surfing and boogie boarding, walking and bike riding, then come back to the house and cook a big dinner. We’ll all go to the media room, watch a movie and fall asleep on the floor.” □